

# Neural modulation of inflammatory reactions in dental tissues incident to orthodontic tooth movement.

## A review of the literature

Vaska Vandevska-Radunovic

Department of Anatomy and Cell Biology, University of Bergen, Norway

**SUMMARY** This article reviews the current knowledge of the biological aspects of dental tissue changes incident to orthodontic tooth movement. The inflammatory nature of these tissue changes was first recognized in the early 1970s, and since then a number of morphological and quantitative investigations have been published in support of this view. The studies dealing with vascular and cellular dental tissue changes, as well as those concerned with inflammatory mediators present at sites of orthodontic tooth movement are systematized and presented accordingly. Special emphasis is placed upon the role of the sensory nerve fibres and their neuropeptides in the control, and development of an inflammatory process, i.e. their role in tooth movement.

### Introduction

Orthodontic tooth movement is induced by mechanical stimuli and facilitated by remodeling of the periodontal ligament (PDL) and alveolar bone. A pre-condition for the remodeling activities, and ultimately tooth displacement, is the occurrence of an inflammatory process. Vascular and cellular changes were the first events to be recognized and described. With the advancement of research techniques, a number of inflammatory mediators, growth factors, and neuropeptides have been demonstrated in the periodontal supporting tissue. Their increased levels during orthodontic tooth movement have led to the assumption that interactions between cells producing these substances, such as nervous, immune, and endocrine cells, regulate the biological responses after the application of an orthodontic force.

This article reviews the current knowledge of the biological aspects of inflammatory changes in dental tissues incident to orthodontic tooth movement. Special emphasis has been placed upon the role of the sensory nerve fibres and their neuropeptides, in the control and development of inflammation, i.e. their role in tooth movement.

Inflammation is a local response of the host to tissue injury, commonly as a reaction to invasion by microbial material, but also to chemical and/or physical stimuli. Regardless of the injurious agent, inflammation is characterized, in its acute form, by the classical signs of redness, heat, swelling, pain, and loss of function. These visual tissue changes are the result of a complex series of events that can be detected microscopically and functionally, and include: (a) vasodilation with increased vessel permeability and blood flow; (b) exudation of fluids; and (c) leukocyte migration into extravascular spaces. The spread of the inflammatory response to a wider tissue area is propagated, as well as amplified by a number of endogenous chemical mediators. Histamine, prostaglandins (PGs), leukotrienes, and cytokines are among the substances that mediate blood flow changes, augment adherence of circulating leukocytes to vascular endothelium, and promote migration of leukocytes into tissues (Gallin *et al.*, 1992; Stephenson, 1992; Guyton and Hall, 1996).

More recently, it has been recognized that, in addition to the classical constituents, peripheral nerve fibres participate in inflammation (Basbaum

and Levine, 1991; Heller *et al.*, 1995; Brain, 1997). This neural contribution is termed 'neurogenic inflammation' and involves release of neuropeptides after antidromic stimulation of afferent nerve endings and initiation of an inflammatory reaction, which can be significantly attenuated by depletion of neuropeptides or by denervation.

### **Inflammatory reactions in dental tissues incident to orthodontic tooth movement**

Prolonged application of mechanical forces that exceed the bio-elastic limits of tooth-supporting structures induce tooth movement (Storey, 1973). These forces represent a physical agent capable of inducing an inflammatory reaction in the connective dental tissues leading to adaptive proliferation and remodelling, mainly in the PDL and alveolar bone (Storey, 1973; Rygh, 1983; Davidovitch *et al.*, 1988). The PDL is confined in a low compliance environment and even light, but continuous orthodontic forces can exert pressure that compromises the integrity of the vascular compartment. Over-compression results in ischaemia, interruption of nutrition and cell death (Rygh, 1972a,b; Storey, 1973), with almost unavoidable formation of a necrotic or hyalinized zone (Reitan, 1951; Reitan and Kvam, 1971; Kvam, 1972; Rygh, 1972b, 1983). These tissue changes, although aseptic, are beyond the limits of a physiological response. The necrotic periodontal structures are potent inflammatory stimuli (Lilja *et al.*, 1983; Stephenson, 1992) leading to blood vessel and cell proliferation in the surrounding areas, with removal of the hyalinized structures and subsequent tissue repair (Rygh, 1974, 1983; Vandevska-Radunovic *et al.*, 1994, 1997a,b; Hellsing and Hammarström, 1996). The remodelling processes in the PDL and alveolar bone represent only one aspect of the alterations of tooth supporting structures. Orthodontic forces also affect the dental pulp and gingiva, inducing vascular changes that are inflammatory in nature (Stenvik and Mjør, 1970; Guevara and McCluggage, 1980; Grieve *et al.*, 1994; Vandevska-Radunovic *et al.*, 1994; Brodin *et al.*, 1996). The anatomy and physiology of the PDL, alveolar bone, gingiva

and dental pulp are closely associated, and the pattern of reaction in one of them is related to the responses in the other tissue compartments. Therefore, the inflammatory changes preceding and coinciding with the remodelling processes necessitated by tooth movement, have to be seen as a part of a wider biological system, involving continuous adjustment of all dental tissues to changed functional demands.

### **Clinical evidence of inflammation in dental tissues**

Gingiva is the only dental tissue visually accessible for direct clinical evaluation of the classic signs of inflammation. Redness and swelling are common clinical observations during fixed orthodontic therapy. In addition, clinical tests such as the Gingival Index and pocket depth probing confirm the development of an inflammatory reaction (Zachrisson and Zachrisson, 1972; Pender *et al.*, 1994). Although gingival inflammation can be due to plaque retention, bracket, or adhesive irritation (Zachrisson and Brobakken, 1978; Davidson *et al.*, 1982), investigation of the gingival crevicular fluid (GCF), its flow rate and glycosaminoglycan (GAG) content indicate that orthodontic tooth movement *per se* induces inflammatory changes in the underlying dental tissues, particularly in the alveolar bone and PDL (Last *et al.*, 1988; Samuels *et al.*, 1993; Pender *et al.*, 1994).

Pain, being one of the cardinal signs of inflammation, is almost inevitable and, for the patient, the most unpleasant reaction to orthodontic therapy. It begins a few hours after application of an orthodontic force and lasts for approximately 5 days (Furstman and Bernik, 1972; Jones, 1984; Kvam *et al.*, 1987; Ngan *et al.*, 1989; Scheurer *et al.*, 1996). Pain results, partly, from stretching and distortion of tissues (Stephenson, 1992) due to mechanical forces, and from interaction of multiple inflammatory mediators with the local pain receptors (Davies and MacIntyre, 1992; Hargraves *et al.*, 1995). Many of the inflammatory mediators shown to elicit hyperalgesic responses, including histamine, PGs, serotonin, bradykinin, and substance P (SP), have increased levels in dental tissues following orthodontic

tooth movement (Yamasaki, 1983; Davidovitch *et al.*, 1989; Nicolay *et al.*, 1990; Saito *et al.*, 1992; Grieve *et al.*, 1994). As pain leads to impaired function, biting and chewing are reported to be the source of the most intense discomfort during fixed orthodontic therapy (Scheurer *et al.*, 1996).

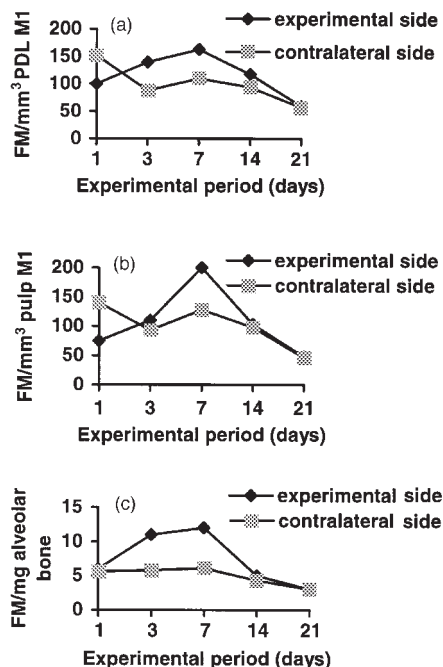
However, administration of anti-inflammatory drugs which suppress PG synthesis, reduces the discomfort after insertion of an orthodontic appliance (Ngan *et al.*, 1994). Taken together, these findings signify initiation of an inflammatory reaction in the peripheral target tissues, with activation and involvement of central mechanisms in response to orthodontic tooth movement.

### Experimental evidence of inflammation

Direct clinical evaluation of any inflammatory alterations in the PDL, pulp, and alveolar bone is impossible because of their anatomy. Therefore, and in order to obtain a thorough insight into the changes elicited by orthodontic forces, it is necessary to evaluate these tissues experimentally. Thus, the use of human material is restricted, and most of the findings of vascular, cellular, and neural changes in dental tissues incident to orthodontic tooth movement are derived from animal experimental models.

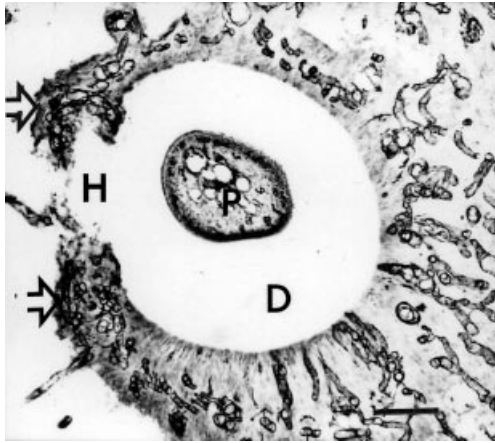
### Vascular changes following orthodontic tooth movement

Numerous investigations have been performed to elucidate the effects of orthodontic forces on the vascular response in dental supporting tissues. Application of both tipping (Gianelly, 1969; Rygh, 1972a,b; Gaengler and Merte, 1983; Nakamura *et al.*, 1986; Rygh *et al.*, 1986; Hosoyama, 1989; Kvinnsland *et al.*, 1989; Vandeyska-Radunovic *et al.*, 1994), and extrusive (Cooper and Sims, 1989; Lew *et al.*, 1989; Brodin *et al.*, 1996) and intrusive forces (Stenvik and Mjør, 1970; Guevara and McCluggage, 1980; Ng *et al.*, 1981; Brodin *et al.*, 1996) seem to induce rapid vascular responses, although the severity of the tissue reaction is dependent on the force magnitude and duration (Gianelly, 1969; Storey, 1973; Ng *et al.*, 1981). The immediate changes in blood vessel morphology



**Figure 1** Blood flow changes in the (a) periodontal ligament (PDL) and (b) pulp of a first maxillary rat molar (M1) and (c) alveolar bone, 1, 3, 7, 14 and 21 days after experimental tooth movement. The number of fluorescent microspheres (FM) per mm<sup>3</sup> and mg tissue is taken as a measure of blood flow changes between the experimental and contralateral molars.

on the pressure side of the PDL and alveolar bone are characterized by compression, and reduction in the number of patent capillaries (Macacanpan *et al.*, 1954; Nakamura *et al.*, 1986), occlusion and partial disintegration of blood vessels (Gianelly, 1969; Rygh, 1972a), and ischaemia (Gaengler and Merte, 1983). Pulpal tissues demonstrate reduced linear velocity (Guevara and McCluggage, 1980), hyperaemia, and margination of white blood cells (Stenvik and Mjør, 1970). Correspondingly, periodontal and pulpal blood flow is reduced (Vandeyska-Radunovic *et al.*, 1994; Brodin *et al.*, 1996), while blood circulation in the alveolar bone seems to be unaffected (Vandeyska-Radunovic *et al.*, 1994; Figure 1). The degenerative vascular changes, as well as the impaired blood supply, lead to formation of a necrotic, hyalinized zone (Reitan,

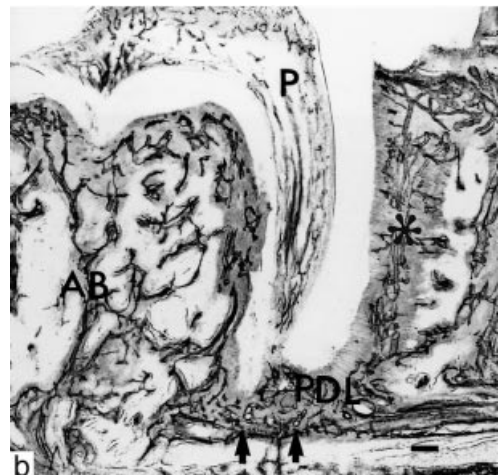
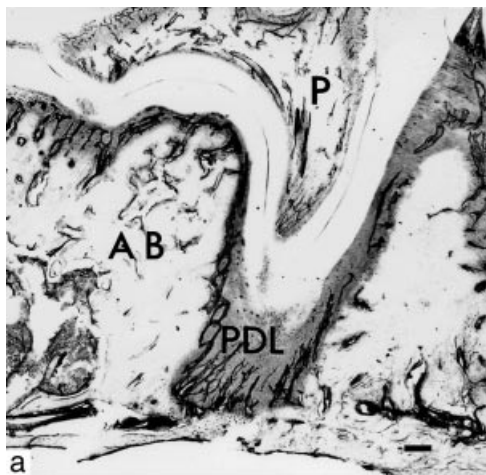


**Figure 2** Horizontal section of a distal root of a first maxillary rat molar, 7 days after experimental tooth movement. Laminin immunopositive blood vessels (open arrows) proliferate and invade the hyalinized tissue (H). D = dentine; P = pulp. Bar = 0.1 mm.

1967; Rygh, 1972b, 1973, 1974; Lilja *et al.*, 1983; Nakamura *et al.*, 1996), which temporarily arrests tooth movement (Reitan, 1967; Rygh, 1976). On the tension side, periodontal vascular changes are not that dramatic (Rygh, 1976). However, early signs of acute inflammation can be observed with distension of blood vessels in

the direction of strain, blood vessel dilation and red blood cell diapedesis (Rygh, 1976; Rygh *et al.*, 1986; Cooper and Sims, 1989). Simultaneously, an increase in the mean vascular volume and number of fenestrae in capillaries and post-capillary venules is observed, indicating that the microvascular bed maintains local blood flow and fluid exchange in accord with tissue needs (Lew *et al.*, 1989).

The sequence of events following the initial vascular responses to orthodontic tooth movement denotes increased vascular activity and propagation of an inflammatory reaction. Morphologically, in the periphery of the hyalinized zone, dilation of blood vessels, proliferation, and ingrowth of vascular structures into the necrotic tissue can be observed (Rygh, 1972a, 1983; Rygh *et al.*, 1986; Hosoyama, 1989; Vandevska-Radunovic *et al.*, 1997b; Figure 2). The vascular changes are not confined only to the PDL, but encompass also the alveolar bone (Rygh *et al.*, 1986; Vandevska-Radunovic *et al.*, 1997b), whereby proliferation of blood vessels and blood-borne cells resorb the bone tissue behind the hyalinized area (Gianelly, 1969; Hosoyama, 1989; Figures 2 and 3). Vasodilation and increased vascular permeability (Warita, 1990), with fluid exudation in the connective tissue



**Figure 3** Density and distribution of laminin immunopositive blood vessels in the periodontal ligament (PDL), pulp (P), and alveolar bone (AB) of a (a) control and (b) experimental first maxillary rat molar, 7 days after experimental tooth movement. Proliferation of blood vessels can be seen in the peri-apical (arrows) and distal tension areas (\*) of the PDL, and in the alveolar bone. Bar = 0.1 mm.



compartment (Lew *et al.*, 1989; Tang and Sims, 1992), do not necessarily lend evidence for increased blood flow, as dilation of blood vessels can also occur during stasis and in connection with reduced blood circulation (Heyeraas-Tønder, 1983). However, quantitative analysis of the blood flow rates in the PDL, pulp, and alveolar bone support data obtained from other histological studies, and demonstrate enhanced blood flow in these tissues (Kvinnslund *et al.*, 1989; McDonald and Pitt Ford, 1994; Vandeyska-Radunovic *et al.*, 1994). Knowing that remodelling of bone and periodontal structures is a cell-mediated process crucial for facilitation of tooth movement, it is conceivable that these tissues show increased blood flow and prepare for the increased cellular demand and activity.

Orthodontic tooth movement is not purely a local phenomenon, but affects the properties of neighbouring teeth and tissues. Evaluation of blood flow changes in the PDL and pulp of rat molars adjacent to the actively moved tooth, also shows significantly increased blood flow values (Kvinnslund *et al.*, 1989; Vandeyska-Radunovic *et al.*, 1994). It has also been demonstrated that local application of orthodontic force induces decreased mechanical properties of the PDL of all teeth in the same dental arch during extraction (Ki, 1990). Administration of anti-inflammatory drugs during orthodontic tooth movement improves the mechanical properties of the PDL in rat molars (Ohkawa, 1982), thus confirming the development of an inflammatory reaction and the importance of the vascular elements in the re-organization of the dental supporting tissues.

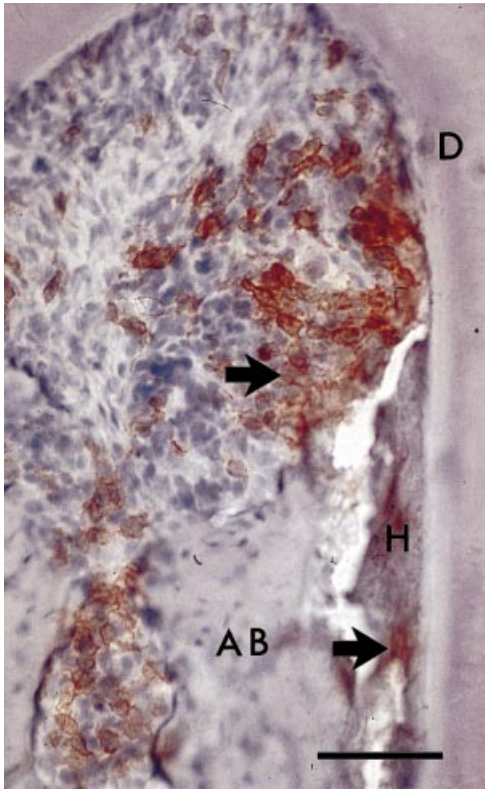
Increased blood vessel volume, blood vessel dilatation and proliferation (Rygh *et al.*, 1986; Murrel *et al.*, 1996; Vandeyska-Radunovic *et al.*, 1997b), and increased blood circulation (Vandeyska-Radunovic *et al.*, 1994) can still be observed 2 weeks after the application of an orthodontic force in rat PDL, but not in the pulp (Vandeyska-Radunovic *et al.*, 1994). The inflammatory vascular reactions subside within 3 weeks in all tissues in the rat model, provided that there has been no reactivation of the orthodontic force (Rygh, 1972a, 1973; Vandeyska-Radunovic *et al.*, 1994, 1997b).

### **Cellular changes in dental tissues following orthodontic tooth movement**

Periodontal and alveolar bone remodelling are cell-mediated processes, and require increased cell attendance, activity, and renewal. They can be provided both by proliferation and differentiation of resident periodontal cells, and by cell migration from the microvasculature to the remodelling sites. Orthodontic forces induce increased mitotic activity in fibroblasts, osteoclasts, and osteoblasts (Kvam, 1972; Roberts and Jee, 1974; Roberts *et al.*, 1974; Smith and Roberts, 1980), and proliferating cells from throughout the PDL are shown to migrate towards the alveolar bone (Roberts and Chase, 1981; McCulloch and Melcher, 1983).

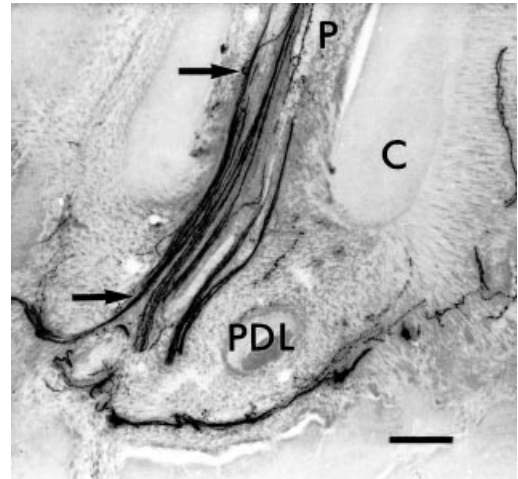
Electron microscopic investigation of the bone resorbing areas demonstrates an increased number of three different cell types: osteoclasts, mononuclear cells such as macrophages, and undifferentiated cells (Kurihara, 1977). Increased number and activity of macrophage-like cells and osteoclasts is also noticed close to the hyaline zone (Kvam, 1972; Brudvik and Rygh, 1993, 1994; Vandeyska-Radunovic *et al.*, 1997a), indicating the importance of these cells not only in bone turnover, but also in the removal of the necrotic periodontal tissue (Figure 4). It has been suggested that the undifferentiated, progenitor cells can transform into osteoclasts, osteoblasts, fibroblasts, or phagocytic cells (Kurihara, 1977), depending on the local tissue need. As the progenitor cells in the PDL are primarily located in paravascular sites and/or vascular channels of the alveolar bone (McCulloch *et al.*, 1987; Lekic and McCulloch, 1996), it is clear that an adequate blood supply is necessary for periodontal cell renewal and also in cases of increased cellular demand.

The development of an inflammatory reaction in the dental tissues following experimental tooth movement is further supported by data from experiments using intra-vital microscopy. Continuous compression, imitating initial application of orthodontic force, induces increased vascular permeability (Warita, 1990; Iida *et al.*, 1992) and leukocyte migration from the microvasculature into the extra-vascular spaces (Iida

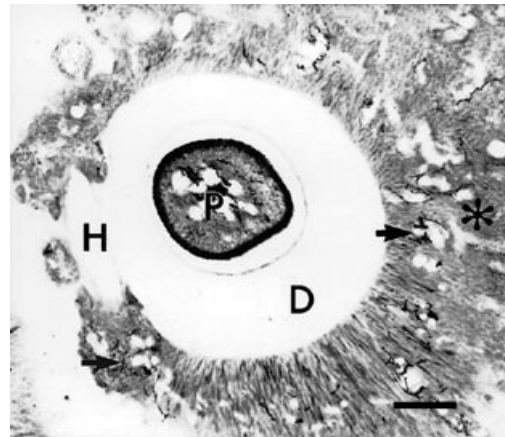


**Figure 4** Inter-radicular area of a first maxillary rat molar, 7 days after experimental tooth movement. Numerous macrophage-like (CD11b<sup>+</sup>) cells surround and invade the hyalinized tissue (H). AB = alveolar bone; D = dentine. Bar = 0.1 mm. (*European Journal of Oral Science* 1997; 105: 36–44, published with kind permission.)

*et al.*, 1996). Electron microscopic observations identify these cells as monocytes and polymorphonuclear leukocytes (Iida *et al.*, 1992), suggesting that cells from the monocyte granulocyte lineage differentiate into macrophages and osteoclast precursor cells. There is extensive evidence to support the concept that osteoclasts arise by fusion of mononuclear phagocytes derived from blood monocytes (Kahn *et al.*, 1978; Teitelbaum and Kahn, 1980; Sminia and Dijkstra, 1986). While increased number and distribution of mononuclear phagocytic cells have been clearly demonstrated, especially in the vicinity of hyalinized tissues (Jäger *et al.*, 1993; Vandevska-Radunovic *et al.*, 1997a), no changes in the number and distribution of lymphocytes

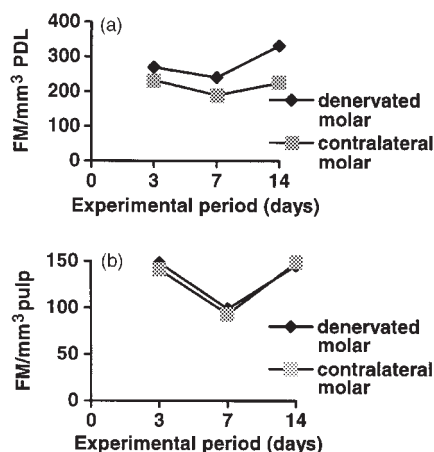


**Figure 5** Peri-apical area of a maxillary rat molar distal root, 7 days after experimental tooth movement. CGRP immunoreactive nerve fibres (arrows) demonstrate increased density both in the peri-apical area of the periodontal ligament (PDL) and root pulp (P). C = cementum. Bar = 0.1 mm.



**Figure 6** Serial section to Figure 2. Numerous nerve sprouts immunoreactive to protein gene product (PGP) 9.5 are seen close to blood vessels (arrows) both in the distal tension area (\*) and near hyalinized tissue (H). D = dentine; P = pulp. Bar = 0.1 mm.

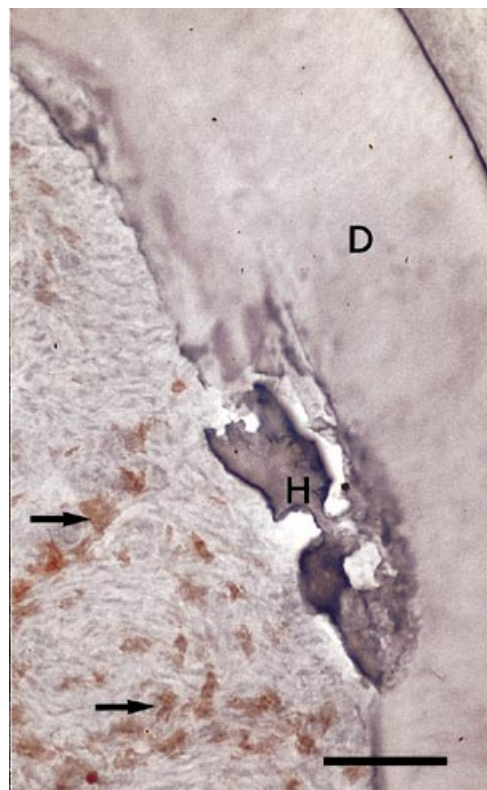
and granulocytes have been reported (Kurihara, 1977; Rygh *et al.*, 1986; Vandevska-Radunovic *et al.*, 1997a). Absence of these cell types provides evidence for an aseptic inflammatory reaction to experimental tooth movement, where macrophage-like cells are the dominant cell



**Figure 7** Blood flow changes in the (a) periodontal ligament (PDL) and (b) pulp of a denervated and contralateral, innervated first mandibular rat molar, 3, 7 and 14 days after axotomy of the inferior alveolar nerve (IAN) and experimental tooth movement. The number of fluorescent microspheres (FM) per mm<sup>3</sup> tissue is taken as a measure of blood flow. Re-innervation of the periodontal and pulpal tissues initiates at approximately 14 days, and coincides with the statistically significant difference in periodontal blood flow between the denervated and contralateral molar.

type. They serve as scavengers, which remove damaged and necrotic material, and secrete a number of biologically active substances that control growth and replication of other cells, such as fibroblasts (Nathan, 1987; Adams and Hamilton, 1992).

Another cell type identified in dental tissues known to participate in the development of inflammatory reactions is the mast cell (Zachrisson, 1967; Yamasaki *et al.*, 1982; Church *et al.*, 1989; Silberstein *et al.*, 1991; Matsson *et al.*, 1995). The early change in the number of toluidine positive mast cells after initiation of orthodontic tooth movement has been interpreted as an early stage of inflammation due to the release of chemical mediators (Yamasaki *et al.*, 1982). Despite the evidence that mast cells and their mediators participate in bone remodeling and provide signals for the recruitment of osteoclast progenitors (Silberstein *et al.*, 1991), they represent only one of the redundant mechanisms providing for skeletal homeostasis (Silberstein *et al.*, 1991; Zernik and Minken, 1992).



**Figure 8** Inter-radicular area of a rat molar, 7 days after axotomy of the inferior alveolar nerve (IAN) and experimental tooth movement. Macrophage-like (CD11b<sup>+</sup>) cells (arrows) approach, but do not invade the hyalinized tissue (H). D = dentine. Bar = 0.1 mm. (*Journal of Dental Research* 1999; in press, published with kind permission.)

### Inflammatory mediators and orthodontic tooth movement

Vascular and cellular inflammatory changes are mediated and maintained by a number of biochemical substances. These mediators are detected in increased levels in dental tissues incident to orthodontic tooth movement and are secreted by the existing inflammatory cells (Henson *et al.*, 1992; Postlethwaite and Kang, 1992). They can act in autocrine or paracrine fashion, either stimulating or inhibiting cellular activity (Tsunawaki *et al.*, 1988; Pretus *et al.*, 1989; Ozaki *et al.*, 1996).

Interleukin-1 (IL-1) and tumour necrosis factor (TNF) are pro-inflammatory cytokines known to induce synthesis of various proteins that, in turn,

elicit acute or chronic inflammation (Dinarello, 1992; Ozaki *et al.*, 1996). Furthermore, *in vitro* studies show that these molecules are stimulators of bone resorption (Gowen and Mundy, 1986; Pfeilschifter *et al.*, 1989). A marked increase in the staining intensity for IL-1 and TNF is noticed in cells of the PDL and alveolar bone of orthodontically moved cat canines, implying their activity in the bone remodelling processes (Davidovitch *et al.*, 1988; Davidovitch, 1991; Saito *et al.*, 1991b).

Orthodontic mechanical forces are also shown to induce increased levels of PGs (Yamasaki, 1983; Davidovitch *et al.*, 1989) and leukotrienes (Mohamed *et al.*, 1989) in both periodontal and bone cells. Together, PGs and leukotrienes are potent inflammatory mediators that lead to increased blood flow and blood vessel permeability, and induce chemotaxis (Lewis and Austen, 1981; Davies and MacIntyre, 1992; Lam and Austen, 1992). They are believed to accelerate bone remodelling processes (Leiker *et al.*, 1995), as substances that inhibit PG and leukotriene synthesis lead to significant reduction of tooth movement (Sandy and Harris, 1984; Mohamed *et al.*, 1989; Giunta *et al.*, 1995). It has been suggested that one of the possible mechanisms through which PGs and leukotrienes affect tooth movement is via inhibition of the inflammatory response (Mohamed *et al.*, 1989).

### **Innervation and inflammation incident to orthodontic tooth movement**

#### *Innervation of dental tissues*

Dental tissues receive sensory, sympathetic and parasympathetic innervation, but the majority of the nerve fibres belong to the trigeminal sensory neurones (Byers and Holland, 1977; Silverman and Kruger, 1987; Wakisaka *et al.*, 1987, 1996; Linden, 1990; Wakisaka, 1990; Heyeraas *et al.*, 1993; Hildebrandt *et al.*, 1995; Byers and Maeda, 1997). In addition to nerves having their perikarya in the trigeminal ganglion, the PDL receives axons from the mesencephalic trigeminal nucleus (Byers *et al.*, 1985, 1986; Millar *et al.*, 1989; Linden *et al.*, 1994). The latter have their nerve endings mainly in the apical periodontal

area, while nerve endings from the trigeminal ganglion are concentrated in the cervical and mid-root area. Periodontal nerve endings consist of mechanoreceptors, mostly Ruffini-like (Byers *et al.*, 1985; Maeda *et al.*, 1989; Loescher and Holland, 1991) and nociceptors (Jyväskylä *et al.*, 1988). The mechanoreceptors are low-threshold, respond to stretch, and are concentrated between the fulcrum and the apex of the tooth (Linden, 1990). Nociceptors are high-threshold, activated by heavy forces, tissue injury, and inflammatory mediators (Jyväskylä *et al.*, 1988; Dong *et al.*, 1993), and belong either to the unmyelinated C fibres or small myelinated A $\delta$  fibres (Sato *et al.*, 1992; Byers and Maeda, 1997). They occur less frequently than the mechanoreceptors in the PDL (Byers and Maeda, 1997), but predominate in the pulp (Hildebrandt *et al.*, 1995). Under physiological conditions periodontal and pulpal nociceptors are silent in terms of electrophysiology, but not inactive (Byers and Maeda, 1997). They contain various neuropeptides (Olgart *et al.*, 1977; Gazelius *et al.*, 1981; Holzer, 1988; Heyeraas *et al.*, 1994; Maggi, 1995), including calcitonin gene-related peptide (CGRP) and SP, which are synthesized in the perikaryon and transported to both central and peripheral processes (Hököfelt *et al.*, 1975). Peripherally, the neuropeptides are released in the tissues where they take part in tissue homeostasis (Olgart *et al.*, 1991; Olgart, 1996; Jacobsen and Heyeraas, 1997). Centrally, evidence exists that CGRP and SP, in addition to other neuropeptides, act as neurotransmitters (Hököfelt *et al.*, 1980; Salt and Hill, 1983).

Nociceptor endings in the PDL and pulp demonstrate plasticity in response to different stimuli. Pulpitis (Byers *et al.*, 1990), traumatic occlusion (Kvinnslund and Heyeraas, 1992) and orthodontic tooth movement (Kvinnslund and Kvinnslund, 1990; Vandevaska-Radunovic *et al.*, 1997b) induce sprouting of CGRP- and SP-containing nerve fibres, and increase in neuropeptide intensity.

#### *Neuropeptides and inflammation*

The contribution of distinct neuropeptides to particular aspects of tissue-specific inflammatory



responses is firmly established and proves that afferent nerve fibres not only serve a sensory role, but take part in local effector mechanisms (Basbaum and Levine, 1991; Payan, 1992; Agro and Stanis, 1995; Heller *et al.*, 1995). CGRP and SP are potent vasodilators (Brain *et al.*, 1985; Gazelius *et al.*, 1987), induce increased vascular permeability (Mayer *et al.*, 1988; Ohkubo *et al.*, 1993), stimulate plasma extravasation, and proliferation of endothelial cells and fibroblasts (Hægerstrand *et al.*, 1990; Figini *et al.*, 1997), and upregulate the expression of endothelial cell adhesion molecules (Smith *et al.*, 1993). These neuropeptides are considered to be mediators of neurogenic inflammation, as depletion of CGRP- and SP-immunoreactive nerve fibres by capsaicin pre-treatment or surgical denervation attenuates the vascular inflammatory responses (Jansco *et al.*, 1967; Kowalski and Kaliner, 1988; Mayer *et al.*, 1988; Fazekas *et al.*, 1990; Pedersen-Bjergaard *et al.*, 1991; Ohkubo *et al.*, 1993; Olgart *et al.*, 1993; Györfi *et al.*, 1994; McDonald *et al.*, 1996; Vandevska-Radunovic *et al.*, 1998).

Apart from these vasoregulatory effects, CGRP and SP are shown to have direct and indirect influence on cells known to participate or be affected by the inflammatory responses. Monocytes, lymphocytes, and mast cells express specific neuropeptide receptors (Umeda and Arizawa, 1989; Abello *et al.*, 1991; Crivellato *et al.*, 1991), which transduce intracellular signals giving rise to cellular responses (Roch-Arveiller *et al.*, 1986; Foreman, 1987; Payan *et al.*, 1987; Peck, 1987; Lotz *et al.*, 1988; Laurenzi *et al.*, 1990; Foster *et al.*, 1992; Payan, 1992; Chancellor-Freeland *et al.*, 1995). These responses include altered cytokine synthesis and release, production of other peptides that may amplify response or cause release of additional neuropeptides, changed expression of adhesion receptors, or direct release of mediators (Roch-Arveiller *et al.*, 1986; Foreman, 1987; Peck, 1987; Lotz *et al.*, 1988; Laurenzi *et al.*, 1990; Foster *et al.*, 1992; Payan, 1992; Chancellor-Freeland *et al.*, 1995). Moreover, neuropeptides can directly influence connective tissue cells, either by inducing their proliferation, or by changing the expression of surface molecules (Nilsson *et al.*, 1985; Payan, 1992).

The ability of neuropeptides to act on endothelial, connective and especially immune cells is not unidirectional. Expression of classic cytokines and their corresponding receptors by endocrine and nervous tissue cells has been clearly demonstrated (Arzt *et al.*, 1993; Cunningham and De Souza, 1993; Blalock, 1994). Cytokines of the interleukin family are involved in regulation of neuronal differentiation (Mehler *et al.*, 1993) and pituitary cell proliferation (Arzt *et al.*, 1993), providing evidence that the immune and neuroendocrine systems share common ligands and receptors, representing an integrated information circuit (Blalock, 1994; Savino and Dardenne, 1995). These neuro-immune interactions can occur, and most probably take place in dental tissues during orthodontic tooth movement.

#### *Sensory innervation and orthodontic tooth movement*

Orthodontic tooth movement affects the number, functional properties and distribution of both mechanoreceptive and nociceptive periodontal nerve fibres. Mechanoreceptors deriving mainly from myelinated fibres, show higher force thresholds, reduced conduction velocities, and decreased number, even after the removal of the orthodontic appliance (Loescher *et al.*, 1993; Long *et al.*, 1996). These changes are attributed to nerve fibre degeneration, being in favour of the notion that orthodontic forces induce nerve injury which might be permanent (Long *et al.*, 1996).

Nociceptive nerve fibres demonstrate different reactions to experimental tooth movement. In stressed teeth, both the PDL and pulp show intensified staining, and pronounced sprouting of nerve fibres immunoreactive to CGRP and SP (Davidovitch *et al.*, 1988, 1989; Kvinnsland and Kvinnsland, 1990; Nicolay *et al.*, 1990; Saito *et al.*, 1991a; Vandevska-Radunovic *et al.*, 1997b; Figure 5). In addition, these fibres show changed morphology and distribution (Kvinnsland and Kvinnsland, 1990; Vandevska-Radunovic *et al.*, 1997b), which all together coincide and colocalize with the vascular and cellular dental tissue changes (Vandevska-Radunovic *et al.*,

1994, 1997a,b; Figure 6). It has also been shown that the increased density of CGRP- and SP-immunopositive nerves persists in the rat PDL, pulp and marginal gingiva after the removal of the orthodontic appliance (Norevall *et al.*, 1995) and concurs with the reparative tissue processes.

Davidovitch *et al.* (1988) were the first to propose the hypothesis that neurotransmitters, released in the PDL following the application of an orthodontic force, interact with endothelial cells and lead to rapid vasodilatation, followed by extrusion of plasma and cells. They suggested that the peripheral nervous system acts as a link between the physical stimulus and the biochemical responses, as paradental tissues demonstrate not only increased SP immunoreactivity, but also elevation in cyclic nucleotides (Davidovitch *et al.*, 1988, 1989). Although the increased density of CGRP and SP containing fibres, which coincides with the vascular and cellular changes during tooth movement (Rygh *et al.*, 1986; Davidovitch *et al.*, 1988; Vandevska-Radunovic *et al.*, 1994, 1997a,b), is strongly in favour of this hypothesis, there has so far been no direct evidence that peptidergic sensory nerves control the development of the early inflammatory and later reparative dental tissue reactions.

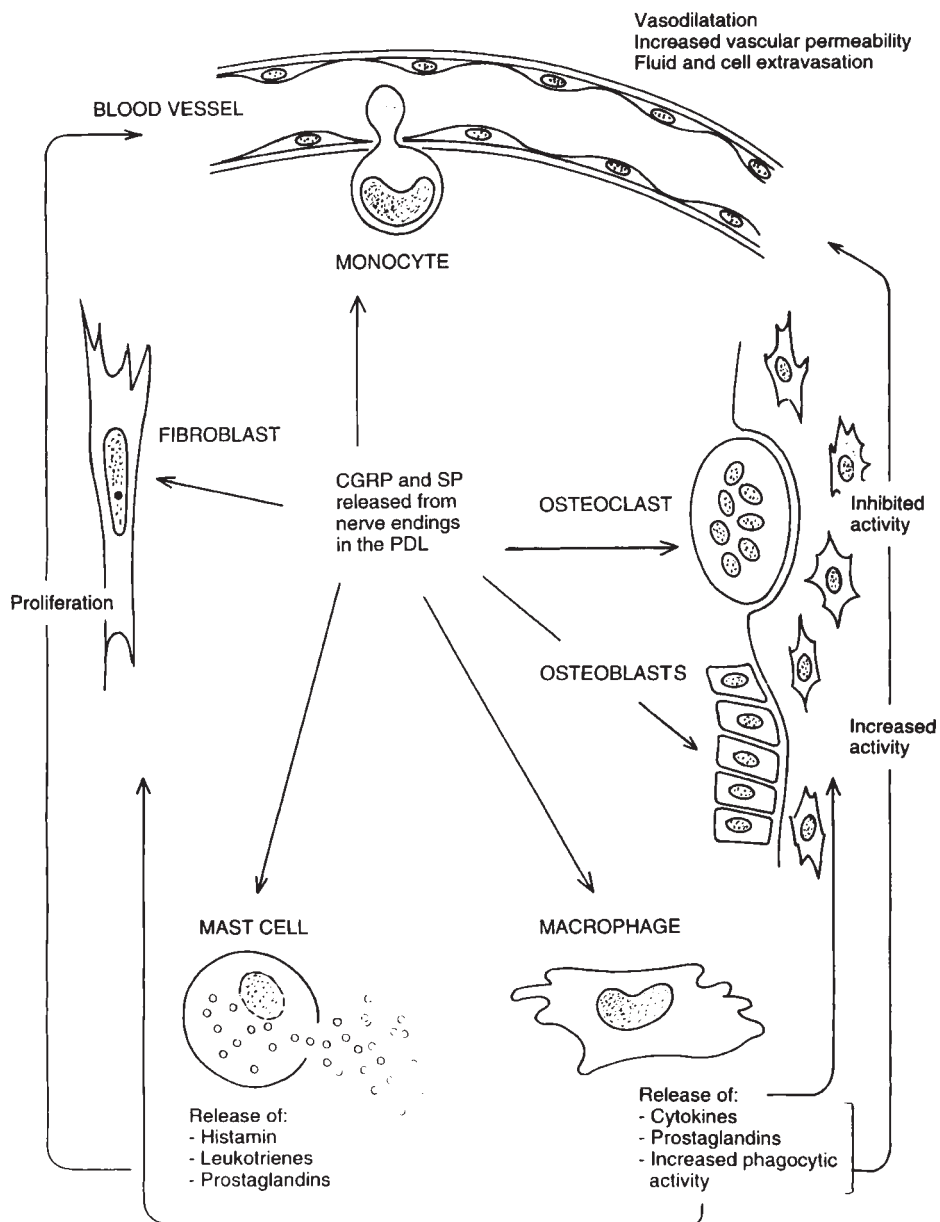
Evidence exists that SP and CGRP play a pro-inflammatory role in disease, and a beneficial role in wound healing in various tissues (for review see Maggi, 1995; Brain, 1997). During inflammation, and especially after nerve axotomy, changes in peptide expression in primary sensory neurones occur, which can have functional implications in the course of an inflammatory condition (see Hökfelt *et al.*, 1994). Therefore, it was logical to assume that deprivation of the sensory nerve supply in dental tissues could lead to a changed inflammatory response once orthodontic forces are applied (Vandevska-Radunovic *et al.*, 1998, 1999). Recently, axotomy of the inferior alveolar nerve (IAN) has been shown to impede and postpone periodontal and pulpal blood flow, until a sensory tissue re-innervation is established (Vandevska-Radunovic *et al.*, 1998; Figure 7). Re-innervation processes and the concurrent blood flow increase during orthodontic

tooth movement are found to precede the recruitment of immunocompetent cells of the mononuclear phagocytic lineage (Vandevska-Radunovic *et al.*, 1999; Figure 8). This observation suggests that not only sensory re-innervation, but also increased blood supply is a prerequisite for the deployment of mononuclear phagocytes into inflamed dental tissues. Furthermore, it has been found that denervation reduces bone formation (Duan *et al.*, 1993). Collectively, these data clearly show that neurogenic mechanisms take part and modulate the development of the early inflammatory, as well as later reparative processes incident to orthodontic tooth movement.

### Concluding remarks and future research

Denervation of dental tissues by sectioning the IAN has proven to be a suitable model system for analysing efferent actions of sensory nerves. Such studies clearly demonstrate the regulatory role of the sensory nerve fibres in the control and development of inflammatory reactions during orthodontic tooth movement. Thus, the dental tissue reactions are a result of both direct and indirect activity of the neuropeptides released from periodontal nerve endings after application of orthodontic force as schematically presented in Figure 9.

Development of an inflammatory reaction is a prerequisite for tooth movement. As sensory denervation of dental tissues attenuates the inflammatory response, several questions arise: can teeth be moved if their sensory innervation is compromised? If they can, will it be slower and to what extent will it have clinical relevance? The issue seems to be of importance, especially in cases where combined orthodontic and extensive surgical treatment is chosen, and where sensory innervation is severed. Other aspects that require investigation are the effects of sensory nerves and neuropeptides on hard tissue and cement formation, and, in this respect, root resorption. The mechanisms of dental root resorption related to orthodontic tooth movement are still obscure and it is possible that by using the denervation-model-system this phenomenon can partly be elucidated.



**Figure 9** Schematic presentation of the tissue responses to calcitonin gene-related peptide (CGRP) and substance P (SP) released from periodontal nerve endings following application of an orthodontic force.

### Address for correspondence

Vaska Vandevska-Radunovic  
Department of Anatomy and Cell Biology  
University of Bergen  
Årstadveien 19  
N-5009 Bergen  
Norway

### Acknowledgements

The author would like to thank Professors Steinar Kvinnsland and Inger Hals Kvinnsland, for useful comments while reviewing this article, and Rune Haakonsen, Jørgen Barth and Liv Skarstein, for preparation of the illustrations.

### References

- Abello J, Kaiserlian D, Cuber J C, Revillard J P, Chayvialle J A 1991 Characterization of the calcitonin gene-related peptide receptors and adenylate cyclase response in the murine macrophage cell line P338D1. *Neuropeptides* 19: 43–49
- Adams D O, Hamilton T A 1992 Macrophages as destructive cells in host defence. In: Gallin J I, Goldstein I M, Snyderman R (eds) *Inflammation: basic principles and clinical correlates*, 2nd edn. Raven Press Ltd., New York, pp. 637–662
- Agro A, Stanisz A M 1995 Neuroimmunomodulation: classical and non-classical cellular activation. *Advances in Neuroimmunology* 5: 311–319
- Arzt E *et al.* 1993 Interleukin involvement in anterior pituitary cell growth regulation: effects of IL-2 and IL-6. *Endocrinology* 132: 459–467
- Basbaum A I, Levine J D 1991 The contribution of the nervous system to inflammation and inflammatory disease. *Canadian Journal of Physiology and Pharmacology* 69: 647–651
- Blalock J E 1994 The syntax of immune-neuroendocrine communication. *Immunology Today* 15: 504–511
- Brain S D 1997 Sensory neuropeptides: their role in inflammation and wound healing. *Immunopharmacology* 37: 133–152
- Brain S D, Williams T J, Tippins J R, Morris H R, MacIntyre I 1985 Calcitonin gene-related peptide is a potent vasodilator. *Nature* 313: 54–56
- Brodin P, Linge L, Aars H 1996 Instant assessment of pulpal blood flow after orthodontic force application. *Journal of Orofacial Orthopedics* 57: 306–309
- Brudvik P, Rygh P 1993 Non-clast cells start orthodontic root resorption in the periphery of hyalinized zones. *European Journal of Orthodontics* 15: 467–480
- Brudvik P, Rygh P 1994 Multi-nucleated cells remove the main hyalinized tissue and start resorption of adjacent root surfaces. *European Journal of Orthodontics* 16: 265–273
- Byers M R, Holland G R 1977 Trigeminal nerve endings in gingiva, junctional epithelium and periodontal ligament of rat molars as demonstrated by autoradiography. *Anatomical Record* 188: 509–524
- Byers M R, Maeda T 1997 Periodontal innervation: Regional specializations, ultrastructure, cytochemistry and tissue interactions. *Acta Medicinæ Dentium Helvetica* 2: 116–133
- Byers M R, Martin R F, O'Connor T A, Dong W K 1985 Mesencephalic trigeminal sensory axons in cats form unencapsulated Ruffini-like mechanoreceptors in periodontal ligament but not tooth pulp. *Neuroscience* 11: 117 (Abstract)
- Byers M R, O'Connor T A, Martin R F, Dong W K 1986 Mesencephalic trigeminal sensory neurons of cat: axon pathways and structure of mechanoreceptive endings in periodontal ligament. *Journal of Comparative Neurology* 250: 181–191
- Byers M R, Taylor P E, Khayat B G, Kimberly C L 1990 Effects of injury and inflammation on pulpal and periapical nerves. *Journal of Endodontics* 16: 78–84
- Chancellor-Freeland C *et al.* 1995 Substance P and stress-induced changes in macrophages. *Annals of the New York Academy of Sciences* 771: 472–484
- Church M K, Lowman M A, Rees P H, Benyon R C 1989 Mast cells, neuropeptides and inflammation. *Agents and Actions* 27: 8–16
- Cooper S M, Sims M R 1989 Evidence of acute inflammation in the periodontal ligament subsequent to orthodontic tooth movement in rats. *Australian Orthodontic Journal* 11: 107–109
- Crivellato E, Damiani D, Mallardi F, Travan L 1991 Suggestive evidence for a microanatomic relationship between mast cells and nerve fibres containing substance P, calcitonin gene-related peptide, vasoactive intestinal polypeptide, and somatostatin in the rat mesentery. *Acta Anatomica* 141: 127–131
- Cunningham E T Jr, De Souza E B 1993 Interleukin-1 receptors in the brain and endocrine tissues. *Immunology Today* 14: 171–176
- Davidovitch Z 1991 Tooth movement. *Critical Reviews in Oral Biology and Medicine* 2: 411–450
- Davidovitch Z, Nicolay O F, Ngan P W, Shanfeld J L 1988 Neurotransmitters, cytokines and the control of alveolar bone remodeling in orthodontics. *Dental Clinics of North America* 32: 411–434
- Davidovitch Z *et al.* 1989 First and second messenger interactions in stressed connective tissues *in vivo*. In: Norton L A, Burstone C J (eds) *The biology of tooth movement*. CRC Press, Boca Raton, FL, pp. 97–129
- Davidson W M, Sheinis E M, Shepherd S R 1982 Tissue reaction to orthodontic adhesives. *American Journal of Orthodontics* 82: 502–507
- Davies P, MacIntyre D E 1992 Prostaglandins and inflammation. In: Gallin J I, Goldstein I M, Snyderman R (eds) *Inflammation: basic principles and clinical correlates*, 2nd edn. Raven Press Ltd., New York, pp. 123–138



- Dinareello C A 1992 Role of interleukin-1 and tumor necrosis factor in systemic responses to infection and inflammation. In: Gallin J I, Goldstein I M, Snyderman R (eds) *Inflammation: basic principles and clinical correlates*, 2nd edn. Raven Press Ltd., New York, pp. 211–232
- Dong W K, Shiwaku T, Kawakami Y, Chudler E H 1993 Static and dynamic responses of periodontal ligament mechanoreceptors and intradental mechanoreceptors. *Journal of Neurophysiology* 69: 1567–1582
- Duan Y, Inoue H, Kawakami M, Kato J, Sakuda M 1993 Changes in bone formation during experimental tooth movement after denervation of the rabbit inferior alveolar nerve. *Journal of the Osaka University Dental School* 33: 45–50
- Fazekas A, Vindisch K, Posch E, Györfi A 1990 Experimentally-induced neurogenic inflammation in the rat oral mucosa. *Journal of Periodontal Research* 25: 276–282
- Figini M *et al.* 1997 Substance P and bradykinin stimulate plasma extravasation in the mouse gastrointestinal tract and pancreas. *American Journal of Physiology* 272: G785–G793
- Foreman J C 1987 Substance P and calcitonin gene-related peptide: effects on mast cells and in human skin. *International Archives of Allergy and Applied Immunology* 82: 366–371
- Foster C A, Mandak B, Kromer E, Rot A 1992 Calcitonin gene-related peptide is chemotactic for human T lymphocytes. *Annals of the New York Academy of Sciences* 657: 397–404
- Furstman L, Bernik S 1972 Clinical consideration of the periodontium. *American Journal of Orthodontics* 61: 138–155
- Gallin J I, Goldstein I M, Snyderman R (eds) 1992 Overview. *Inflammation: basic principles and clinical correlates*, 2nd edn. Raven Press Ltd., New York, pp. 1–4
- Gaengler P, Merte K 1983 Effects of force application on periodontal blood circulation. *Journal of Periodontal Research* 18: 86–92
- Gazelius B, Brodin E, Olgart L 1981 Depletion of substance P-like immunoreactivity in the cat dental pulp by antidromic nerve stimulation. *Acta Physiologica Scandinavica* 111: 319–327
- Gazelius B *et al.* 1987 Vasodilatory effects and coexistence of calcitonin gene-related peptide (CGRP) and substance P in sensory neurons of cat dental pulp. *Acta Physiologica Scandinavica* 130: 33–40
- Gianelly A A 1969 Force-induced changes in the vascularity of the periodontal ligament. *American Journal of Orthodontics* 55: 5–11
- Giunta D, Keller J, Farsø Nielsen F, Melsen B 1995 Influence of indomethacin on bone turnover related to orthodontic tooth movement in miniature pigs. *American Journal of Orthodontics and Dentofacial Orthopedics* 108: 361–366
- Gowen M, Mundy G R 1986 Actions of recombinant interleukin 1 and interleukin 2, and interferon- $\gamma$  on bone resorption *in vitro*. *Journal of Immunology* 136: 2478–2482
- Grieve W G, Johnson G K, Moore R N, Reinhardt R A, Dubois L M 1994 Prostaglandin E (PGE) and interleukin-1 $\beta$  (IL-1 $\beta$ ) levels in gingival crevicular fluid during human orthodontic tooth movement. *American Journal of Orthodontics and Dentofacial Orthopedics* 105: 369–374
- Guevara M J, McCluggage S G 1980 Effects of intrusive forces upon the microvasculature of the dental pulp. *Angle Orthodontist* 50: 129–134
- Guyton A C, Hall J E 1996 *Textbook of medical physiology*, 9th edn. W.B. Saunders Company, Philadelphia, pp. 439–443
- Györfi A, Fazekas A, Suba Zs, Ender F, Rosivall L 1994 Neurogenic component in ligature-induced periodontitis in the rat. *Journal of Clinical Periodontology* 21: 601–605
- Hägerstrand A, Dalsgaard C-J, Jonzon B, Larsson O, Nilsson J 1990 Calcitonin gene-related peptide stimulates proliferation of human endothelial cells. *Proceedings of the National Academy of Sciences* 87: 3299–3303
- Hargraves K M, Roszkowski M T, Jackson D J, Swift J Q 1995 Orofacial pain. Peripheral mechanisms. In: Friction J R, Dubner R (eds) *Orofacial pain and temporomandibular disorders*. Raven Press Ltd., New York, pp. 33–42
- Heller P H, Green P G, Tanner K D, Miao F J-P, Levine J D 1995 Peripheral neural contributions to inflammation. In: Friction J R, Dubner R (eds) *Orofacial pain and temporomandibular disorders*. Raven Press Ltd., New York, pp. 73–83
- Hellsing E, Hammarström L 1996 The hyaline zone and associated root surface changes in experimental orthodontics in rats: a light and scanning electron microscope study. *European Journal of Orthodontics* 18: 11–18
- Henson P M, Henson J E, Fittschen C, Bratton D L, Riches D W 1992 Degranulation and secretion by phagocytic cells. In: Gallin J I, Goldstein I M, Snyderman R (eds) *Inflammation: basic principles and clinical correlates*, 2nd edn. Raven Press Ltd., New York, pp. 511–539
- Heyeraas-Tønder K 1983 Vascular reactions in the dental pulp during inflammation. *Acta Odontologica Scandinavica* 41: 247–256
- Heyeraas K J, Kvinnsland I, Byers M R, Jacobsen E J 1993 Nerve fibres immunoreactive to protein gene product 9.5, calcitonin gene-related peptide, substance P, and neuropeptide Y in the dental pulp, periodontal ligament, and gingiva in cats. *Acta Odontologica Scandinavica* 51: 207–221
- Heyeraas K J, Kim S, Raab W H-M, Byers M R, Lin M 1994 Effect of electrical tooth stimulation on blood flow, interstitial fluid pressure, and substance P and CGRP-immunoreactive nerve fibres in the low compliant cat dental pulp. *Microvascular Research* 47: 329–343
- Hildebrand C, Fried K, Tuisku F, Johansson C S 1995 Teeth and tooth nerves. *Progress in Neurobiology* 45: 165–222
- Hökfelt T, Kellerth J O, Nilsson G, Pernow B 1975 Substance P: localization in the central nervous system and in some primary sensory neurons. *Science* 190: 889–890

- Hökfelt T, Johansson O, Ljungdahl Å, Lundberg J M, Schultzberg M 1980 Peptidergic neurones. *Nature* 284: 515–521
- Hökfelt T, Zhang X, Wiesenfeld-Hallin Z 1994 Messenger plasticity in primary sensory neurons following axotomy and its functional implications. *Trends in Neurosciences* 17: 22–30
- Holzer P 1988 Local effector functions of capsaicin-sensitive sensory nerve endings: involvement of tachykinins, calcitonin gene-related peptide and other neuropeptides. *Neuroscience* 24: 739–768
- Hosoyama M 1989 Changes in the microvascular pattern of the periodontium in an experimental tooth movement. *Journal of the Japanese Orthodontic Society* 48: 425–442
- Iida J, Inage S, Kurihara S, Miura F 1992 Changes in the microvasculature after mechanical pressure on the hamster cheek pouch. *Journal of Dental Research* 71: 1304–1309
- Iida J, Warita H, Nakagawa N, Soma K 1996 White blood cell movement in post-capillary venule during intermittent or continuous compressions. In: Davidovitch Z, Norton L A (eds) *Biological mechanisms of tooth movement and craniofacial adaptation*. Harvard Society for the Advancement of Orthodontics, Boston, Massachusetts, pp. 189–194
- Jacobsen E B, Heyeraas K J 1997 Pulpal interstitial fluid pressure and blood flow after denervation and electrical tooth stimulation in the ferret. *Archives of Oral Biology* 42: 407–415
- Jäger A, Radlanski R J, Götz W 1993 Demonstration of cells of the mononuclear phagocyte lineage in the periodontium following experimental tooth movement in the rat. An immunohistochemical study using monoclonal antibodies ED1 and ED2 on paraffin-embedded tissues. *Histochemistry* 100: 161–166
- Jancso N, Jancso-Gabor A, Szolcsanyi J 1967 Direct evidence for neurogenic inflammation and its prevention by denervation and by pretreatment with capsaicin. *British Journal of Pharmacology and Chemotherapy* 31: 138–151
- Jones M 1984 An investigation into the initial discomfort caused by placement of an archwire. *European Journal of Orthodontics* 6: 48–54
- Jyväsjarvi E, Kniffki K D, Mengel M K C 1988 Functional characteristics of afferent C fibres from tooth pulp and periodontal ligament. *Progress in Brain Research* 74: 237–245
- Kahn A J, Stewart C C, Teitelbaum S L 1978 Contact-mediated bone resorption by human monocytes *in vitro*. *Science* 199: 988–990
- Ki H R 1990 The effects of orthodontic forces on the mechanical properties of the periodontal ligament in the rat maxillary molars. *American Journal of Orthodontics and Dentofacial Orthopedics* 98: 533–543
- Kowalski M L, Kaliner M A 1988 Neurogenic inflammation, vascular permeability, and mast cells. *Journal of Immunology* 140: 3905–3911
- Kurihara S 1977 An electron microscopic observation on cells found in bone resorption area incident to experimental tooth movement. *Bulletin of Tokyo Medical and Dental University* 24: 103–123
- Kvam E 1972 Cellular dynamics on the pressure side of the rat periodontium following experimental tooth movement. *Scandinavian Journal of Dental Research* 80: 369–383
- Kvam E, Gjerdet N, Bondevik O 1987 Traumatic ulcers and pain during orthodontic treatment. *Community Dentistry and Oral Epidemiology* 15: 104–107
- Kvinnslund I, Kvinnslund S 1990 Changes in CGRP-immunoreactive nerve fibres during experimental tooth movement in rats. *European Journal of Orthodontics* 12: 320–329
- Kvinnslund I, Heyeraas K J 1992 Effect of traumatic occlusion on CGRP and SP immunoreactive nerve fibre morphology in rat molar pulp and periodontium. *Histochemistry* 97: 111–120
- Kvinnslund S, Heyeraas K J, Øfjord E S 1989 Effect of experimental tooth movement on periodontal and pulpal blood flow. *European Journal of Orthodontics* 11: 200–205
- Lam B K, Austen K F 1992 Leukotrienes. Biosynthesis, release, and actions. In: Gallin J I, Goldstein I M, Snyderman R (eds) *Inflammation: basic principles and clinical correlates*, 2nd edn. Raven Press Ltd., New York, pp. 139–147
- Last K S, Donkin C, Embery G 1988 Glycosaminoglycans in human gingival crevicular fluid during orthodontic movement. *Archives of Oral Biology* 33: 907–912
- Laurenzi M A, Persson M A A, Dalsgaard C J, Hægerstrand A 1990 The neuropeptide substance P stimulates production of interleukin 1 in human blood monocytes: activated cells are preferentially influenced by the neuropeptide. *Scandinavian Journal of Immunology* 31: 529–533
- Leiker B J, Nanda R S, Currier G F, Howes R I, Sinha P K 1995 The effects of exogenous prostaglandins on orthodontic tooth movement in rats. *American Journal of Orthodontics and Dentofacial Orthopedics* 108: 380–388
- Lekic P, McCulloch C A G 1996 Periodontal ligament cell populations: the central role of fibroblasts in creating a unique tissue. *Anatomical Record* 245: 327–341
- Lew K, Sims M R, Leppard P I 1989 Tooth extrusion effects on microvessel volumes, endothelial areas, and fenestrae in molar apical periodontal ligament. *American Journal of Orthodontics and Dentofacial Orthopedics* 96: 221–231
- Lewis R A, Austen F 1981 Mediation of local homeostasis and inflammation by leukotrienes and other mast cell-dependent compounds. *Nature* 293: 103–107
- Lilja E, Lindskog S, Hammarström L 1983 Histochemistry of enzymes associated with tissue degradation incident to orthodontic tooth movement. *American Journal of Orthodontics* 83: 62–75
- Linden R W A 1990 An update on the innervation of the periodontal ligament. *European Journal of Orthodontics* 12: 91–100
- Linden R W A, Millar J, Halata Z 1994 Comparative physiological and morphological study of periodontal

- ligament mechanoreceptors represented in the trigeminal ganglion and the mesencephalic nucleus of the cat. *Anatomy and Embryology* 190: 127–135
- Loescher A R, Holland G R 1991 Distribution and morphological characteristics of axons in the periodontal ligament of cat canine teeth and the changes observed after reinnervation. *Anatomical Record* 230: 57–72
- Loescher A R, Al-Emran S, Sullivan P G, Robinson P P 1993 Characteristics of periodontal mechanoreceptors supplying cat canine teeth which have sustained orthodontic forces. *Archives of Oral Biology* 38: 663–669
- Long A, Loescher A R, Robinson P P 1996 A histological study on the effect of different periods of orthodontic force on the innervation and dimensions of the cat periodontal ligament. *Archives of Oral Biology* 41: 799–808
- Lotz M, Vaughan J H, Carson D A 1988 Effect of neuropeptides on production of inflammatory cytokines by human monocytes. *Science* 241: 1218–1221
- Macapanpan L C, Weinmann J P, Brodie A G 1954 Early tissue changes following tooth movements in rats. *Angle Orthodontist* 24: 79–95
- Maeda T, Sato O, Kobayashi S, Iwanaga T, Fujita T 1989 The ultrastructure of Ruffini endings in the periodontal ligament of rat incisors with special reference to the terminal Schwann cells (K-cells). *Anatomical Record* 223: 95–103
- Maggi C A 1995 Tachykinins and calcitonin gene-related peptide (CGRP) as co-transmitters released from peripheral endings of sensory nerves. *Progress in Neurobiology* 45: 1–98
- Matsson L, Norevall L-I, Forsgren S 1995 Anatomic relationship between substance P- and CGRP-immunoreactive nerve fibres and mast cells in the palatal mucosa of the rat. *European Journal of Oral Science* 103: 70–76
- Mayer E A, Raybould H, Koelbel C 1988 Neuropeptides, inflammation, and motility. *Digestive Diseases and Sciences* 33: 71S–77S
- McCulloch C A G, Melcher A H 1983 Cell migration in the periodontal ligament of mice. *Journal of Periodontal Research* 18: 339–352
- McCulloch C A G, Nemeth E, Lowenberg B, Melcher A H 1987 Paravascular cells in endosteal spaces of alveolar bone contribute to periodontal ligament cell populations. *Anatomical Record* 219: 2233–2242
- McDonald D M, Bowden J J, Baluk P, Bunnett N W 1996 Neurogenic inflammation. A model for studying efferent actions of sensory nerves. *Advances in Experimental Medicine and Biology* 410: 453–462
- McDonald F, Pitt Ford T R 1994 Blood flow changes in permanent maxillary canines during retraction. *European Journal of Orthodontics* 16: 1–9
- Mehler M F, Rozental R, Dougherty M, Spray D C, Kessler J A 1993 Cytokine regulation of neuronal differentiation of hippocampal progenitor cells. *Nature* 362: 62–65
- Millar J, Halata Z, Linden R W A 1989 The structure of physiologically located periodontal ligament mechanoreceptors of the cat canine tooth. *Journal of Anatomy* 167: 117–127
- Mohamed A H, Tatakis D N, Dziak R 1989 Leukotrienes in orthodontic tooth movement. *American Journal of Orthodontics and Dentofacial Orthopedics* 95: 231–237
- Murrell E F, Yen E H K, Johnson R B 1996 Vascular changes in the periodontal ligament after removal of orthodontic forces. *American Journal of Orthodontics and Dentofacial Orthopedics* 110: 280–286
- Nakamura F, Nakamura T K, Yoshikawa M, Kiyomura H 1986 Vascular changes in pressure zones of rat molar periodontium following orthodontic tooth movement. *Journal of the Japanese Orthodontic Society* 45: 126–134
- Nakamura Y, Tanaka T, Kuwahara Y 1996 New findings in the degenerating tissues of the periodontal ligament during experimental tooth movement. *American Journal of Orthodontics and Dentofacial Orthopedics* 109: 348–354
- Nathan C 1987 Macrophage secretory products. *Journal of Clinical Investigation* 79: 319–326
- Ng G C, Walker T W, Zingg W, Burke P S 1981 Effects of tooth loading on the periodontal vasculature of mandibular fourth premolar in dogs. *Archives of Oral Biology* 26: 189–195
- Ngan P, Kess B, Wilson S 1989 Perception of discomfort by patients undergoing orthodontic treatment. *American Journal of Orthodontics and Dentofacial Orthopedics* 96: 47–53
- Ngan P, Wilson S, Shanfeld J, Amini H 1994 The effect of ibuprofen on the level of discomfort in patients undergoing orthodontic treatment. *American Journal of Orthodontics and Dentofacial Orthopedics* 106: 88–95
- Nicolay O F, Davidovitch Z, Shanfeld J, Alley K 1990 Substance P immunoreactivity in periodontal tissues during orthodontic tooth movement. *Bone and Mineral* 11: 19–29
- Nilsson J, von Euler A M, Dalsgaard C-J 1985 Stimulation of connective tissue cell growth by substance P and substance K. *Nature* 315: 61–63
- Norevall L I, Forsgren S, Matsson L 1995 Expression of neuropeptides (CGRP, substance P) during and after orthodontic tooth movement in the rat. *European Journal of Orthodontics* 17: 311–325
- Ohkawa S 1982 Effects of orthodontic forces and anti-inflammatory drugs on the mechanical strength of the periodontium in the rat mandibular first molar. *American Journal of Orthodontics* 81: 498–502
- Ohkubo T, Shibata M, Yamada Y, Kaya H, Takahashi H 1993 Role of substance P in neurogenic inflammation in the rat incisor pulp and the lower lip. *Archives of Oral Biology* 38: 151–158
- Olgart L 1996 Neural control of pulpal blood flow. *Critical Reviews in Oral Biology and Medicine* 7: 159–171
- Olgart L, Hökfelt T, Nilsson G, Pernow B 1977 Localization of substance P-like immunoreactivity in nerves in the tooth pulp. *Pain* 4: 153–159
- Olgart L, Edwall L, Gazelius B 1991 Involvement of afferent nerves in pulpal blood-flow reactions in response

- to clinical and experimental procedures in the cat. *Archives of Oral Biology* 36: 575–581
- Olgart L, Edwall L, Fried K 1993 Cat dental pulp after denervation and subsequent re-innervation: changes in blood-flow regulation and distribution of neuropeptide-, GAP-43- and low-affinity neurotrophin receptor-like immunoreactivity. *Brain Research* 625: 109–119
- Ozaki K *et al.* 1996 Interleukin-1 $\beta$  and tumor necrosis factor- $\alpha$  stimulate synergistically the expression of monocyte chemoattractant protein-1 in fibroblastic cells derived from human periodontal ligament. *Oral Microbiology and Immunology* 11: 109–114
- Payan D G 1992 The role of neuropeptides in inflammation. In: Gallin J I, Goldstein I M, Snyderman R (eds) *Inflammation: basic principles and clinical correlates*, 2nd edn. Raven Press Ltd., New York, pp. 177–192
- Payan D G, McGillis J P, Renold F K, Mitsuhashi M, Goetzl E J 1987 Neuropeptide modulation of leukocyte function. *Annals of the New York Academy of Sciences* 496: 264–270
- Peck R 1987 Neuropeptides modulating macrophage function. *Annals of the New York Academy of Sciences* 496: 264–270
- Pedersen-Bjergaard U *et al.* 1991 Calcitonin gene-related peptide, neurokinin A and substance P: effects on nociceptive and neurogenic inflammation in human skin and temporal muscle. *Peptides* 12: 333–337
- Pender N, Samuels R H A, Last K S 1994 The monitoring of orthodontic tooth movement over a 2-year period by analysis of gingival crevicular fluid. *European Journal of Orthodontics* 16: 511–520
- Pfeilschifter J, Chenu C, Bird A, Mundy G R, Roodman G D 1989 Interleukin-1 and tumor necrosis factor stimulate the formation of human osteoclastlike cells *in vitro*. *Journal of Bone and Mineral Research* 4: 113–118
- Postlethwaite A E, Kang A H 1992 Fibroblasts and matrix proteins. In: Gallin J I, Goldstein I M, Snyderman R (eds) *Inflammation: basic principles and clinical correlates*, 2nd edn. Raven Press Ltd., New York, pp. 747–773
- Pretus H A *et al.* 1989 Macrophage activation decreases macrophage prostaglandin E<sub>2</sub> release in experimental trauma. *Journal of Trauma* 29: 1152–1157
- Reitan K 1951 The initial tissue reaction incident to orthodontic tooth movement as related to the influence of function. *Acta Odontologica Scandinavica* 9: 1–240 (Supplement 6)
- Reitan K 1967 Clinical and histologic observations on tooth movement during and after orthodontic treatment. *American Journal of Orthodontics* 53: 721–745
- Reitan K, Kvam E 1971 Comparative behavior of human and animal tissue during experimental tooth movement. *Angle Orthodontist* 41: 1–14
- Roberts W E, Jee W S S 1974 Cell kinetics of orthodontically-stimulated and non-stimulated periodontal ligament in the rat. *Archives of Oral Biology* 19: 17–21
- Roberts W E, Chase D C 1981 Kinetics of cell proliferation and migration associated with orthodontically-induced osteogenesis. *Journal of Dental Research* 60: 174–181
- Roberts W E, Chase D C, Jee W S S 1974 Counts of labelled mitoses in the orthodontically-stimulated periodontal ligament in the rat. *Archives of Oral Biology* 19: 665–670
- Roch-Arveiller M, Regoli D, Chanad B, Lenoir M, Giroud O J P 1986 Tachykinins: Effect on motility and metabolism of polymorphonuclear leukocytes. *Pharmacology* 33: 266–273
- Rygh P 1972a Ultrastructural vascular changes in pressure zones of rat molar periodontium incident to orthodontic tooth movement. *Scandinavian Journal of Dental Research* 80: 307–321
- Rygh P 1972b Ultrastructural cellular reactions in pressure zones of rat molar periodontium incident to orthodontic tooth movement. *Acta Odontologica Scandinavica* 30: 575–593
- Rygh P 1973 Ultrastructural changes of the periodontal fibres and their attachment in rat molar periodontium incident to orthodontic tooth movement. *Scandinavian Journal of Dental Research* 81: 467–480
- Rygh P 1974 Elimination of hyalinized periodontal tissues associated with orthodontic tooth movement. *Scandinavian Journal of Dental Research* 82: 57–73
- Rygh P 1976 Ultrastructural changes in tension zones of rat molar periodontium incident to orthodontic tooth movement. *American Journal of Orthodontics* 70: 269–281
- Rygh P 1983 Periodontal responses to orthodontic forces. In: McNamara Jr J A, Ribbens K A (eds) *Malocclusion and the periodontium*. Monograph No. 15, Craniofacial Growth Series Center for Human Growth and Development, University of Michigan, Ann Arbor, pp. 17–42
- Rygh P, Bowling K, Hovlandsdal L, Williams S 1986 Activation of the vascular system: A main mediator of periodontal fiber remodeling in orthodontic tooth movement. *American Journal of Orthodontics* 89: 453–468
- Saito I, Ishii K, Hanada K, Sato O, Maeda T 1991a Responses of calcitonin gene-related peptide-immunopositive nerve fibres in the periodontal ligament of rat molars to experimental tooth movement. *Archives of Oral Biology* 36: 689–692
- Saito M, Saito S, Ngan P W, Shanfeld J, Davidovitch Z 1991b Interleukin 1 beta and prostaglandin E are involved in the response of periodontal cells to mechanical stress *in vivo* and *in vitro*. *American Journal of Orthodontics and Dentofacial Orthopedics* 99: 226–240
- Saito S *et al.* 1992 Immunohistochemical localization of prostaglandin E and cyclic AMP in periodontal ligament of orthodontically treated cats. *Journal of the Japanese Orthodontic Society* 51: 308–317
- Salt T E, Hill R G 1983 Neurotransmitter candidates of somatosensory primary afferent fibres. *Neuroscience* 10: 1083–1103
- Samuels R H A, Pender N, Last K S 1993 The effects of orthodontic tooth movement on the glycosaminoglycan components of gingival crevicular fluid. *Journal of Clinical Periodontology* 20: 371–377
- Sandy J R, Harris M 1984 Prostaglandins and tooth movement. *European Journal of Orthodontics* 6: 175–182



- Sato O, Takeuchi-Maeno H, Maeda T, Takano Y 1992 Immunoelectron microscopic observation of calcitonin gene-related peptide (CGRP)-positive nerves in the dental pulp of rat molars. *Archives of Histology and Cytology* 55: 561–568
- Savino W, Dardenne M 1995 Immune-neuroendocrine interactions. *Immunology Today* 16: 318–321
- Scheurer P A, Firestone A R, Bürgin W B 1996 Perception of pain as a result of orthodontic treatment with fixed appliances. *European Journal of Orthodontics* 18: 349–357
- Silberstein R, Melnick M, Greenberg G, Minkin C 1991 Bone remodelling in W/W<sup>v</sup> mast cell deficient mice. *Bone* 12: 227–236
- Silverman J D, Kruger L 1987 An interpretation of dental innervation based upon the pattern of calcitonin gene-related peptide (CGRP)-immunoreactive thin sensory axons. *Somatosensory Research* 5: 157–175
- Sminia T, Dijkstra C D 1986 The origin of osteoclasts: An immunohistochemical study on macrophages and osteoclasts in embryonic rat bone. *Calcified Tissue International* 39: 263–266
- Smith C H, Barker J N W N, Morris R W, MacDonald D M, Lee T H 1993 Neuropeptides induce rapid expression of endothelial adhesion molecules and elicit granulocytic infiltration in the human skin. *Journal of Immunology* 151: 3274–3282
- Smith R K, Roberts W E 1980 Cell kinetics of the initial response to orthodontically induced osteogenesis in rat molar periodontal ligament. *Calcified Tissue International* 30: 51–56
- Stenvik A, Mjør J 1970 Pulp and dentine reactions to experimental tooth intrusion. *American Journal of Orthodontics* 57: 370–385
- Stephenson T J 1992 Inflammation. In: Underwood J C E (ed.) *General and systematic pathology*. Churchill Livingstone, London, pp. 177–200
- Storey E 1973 The nature of tooth movement. *American Journal of Orthodontics* 63: 292–315
- Tang M P F, Sims M R 1992 TEM analysis of tissue channels in normal and orthodontically tensioned rat molar periodontal ligament. *European Journal of Orthodontics* 14: 433–444
- Teitelbaum S L, Kahn A J 1980 Mononuclear phagocytes, osteoclasts and bone resorption. *Mineral and Electrolyte Metabolism* 3: 2–9
- Tsunawaki S, Sporn M, Ding A, Nathan C 1988 Deactivation of macrophages by transforming growth factor- $\beta$ . *Nature* 334: 260–262
- Umeda Y, Arizawa M 1989 Characterization of the calcitonin gene-related peptide receptor in mouse T lymphocytes. *Neuropeptides* 14: 237–242
- Vandevska-Radunovic V, Kristiansen A B, Heyeraas K J, Kvinnsland S 1994 Changes in blood circulation in teeth supporting tissues incident to experimental tooth movement. *European Journal of Orthodontics* 16: 361–369
- Vandevska-Radunovic V, Hals Kvinnsland I, Kvinnsland S, Jonsson R 1997a Immunocompetent cells in rat periodontal ligament and their recruitment incident to experimental orthodontic tooth movement. *European Journal of Oral Science* 105: 36–44
- Vandevska-Radunovic V, Kvinnsland S, Hals Kvinnsland I 1997b Effect of experimental tooth movement on nerve fibres immunoreactive to calcitonin gene-related peptide, protein gene product 9.5, and blood vessel density and distribution in rats. *European Journal of Orthodontics* 19: 517–529
- Vandevska-Radunovic V, Hals Kvinnsland I, Kvinnsland S 1998 Effect of inferior alveolar nerve axotomy on periodontal and pulpal blood flow subsequent to experimental tooth movement in rats. *Acta Odontologica Scandinavica* 56: 57–64
- Vandevska-Radunovic V, Kvinnsland S, Jonsson R 1999 Delayed recruitment of immunocompetent cells in denervated rat periodontal ligament following experimental tooth movement. *Journal of Dental Research* (in press)
- Wakisaka S 1990 Neuropeptides in the dental pulp: distribution, origins, and correlation. *Journal of Endodontics* 16: 67–69
- Wakisaka S *et al.* 1987 The distribution and origin of calcitonin gene-related peptide-containing nerve fibres in feline dental pulp. *Histochemistry* 86: 585–589
- Wakisaka S, Youn S H, Kato J, Takemura M, Kurisu K 1996 Neuropeptide Y-immunoreactive primary afferents in the dental pulp and periodontal ligament following peripheral nerve injury to the alveolar inferior nerve in the rat. *Brain Research* 712: 11–18
- Warita H 1990 Intra-vital and electron microscopic observations on increased vascular permeability to light mechanical stimulation. *Journal of the Stomatological Society of Japan* 57: 520–548
- Yamasaki K 1983 The role of cyclic AMP, calcium, and prostaglandins in the induction of osteoclastic bone resorption associated with experimental tooth movement. *Journal of Dental Research* 62: 877–881
- Yamasaki K, Shibasaki Y, Fukuhara T 1982 Behavior of mast cells in periodontal ligament associated with experimental tooth movement in rats. *Journal of Dental Research* 61: 1447–1450
- Zachrisson B U 1967 Mast cells of the human gingiva. II. Metachromatic cells at low pH in healthy and inflamed tissue. *Journal of Periodontal Research* 2: 87–105
- Zachrisson S, Zachrisson B U 1972 Gingival condition associated with orthodontic treatment. *Angle Orthodontist* 42: 26–35
- Zachrisson B U, Brobakken B O 1978 Clinical comparison of direct versus indirect bonding with different bracket types and adhesives. *American Journal of Orthodontics* 74: 62–78
- Zernik J H, Minken C 1992 Genetic control of bone remodeling. *California Dental Association* 20: 14–19